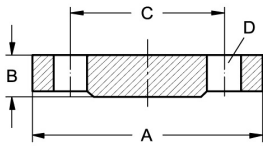


Welding neck flanges EN 1092-1

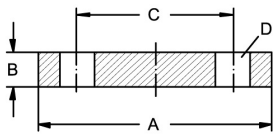
Art.No	EUR	Art.No	EUR
--------	-----	--------	-----

Blind flange EN 1092-1, form B1, PN 6



DN	A	B	C	D		AISI316L-1.4404	AISI316Ti-1.4571
10	75	12	50	4xM10x40		587330	Enquiry 583530
15	80	12	55	4xM10x40		587331	Enquiry 583531
20	90	14	65	4xM10x50		587332	Enquiry 583532
25	100	14	75	4xM10x50		587333	Enquiry 583533
32	120	14	90	4xM12x55		587334	Enquiry 583534
40	130	14	100	4xM12x55		587335	Enquiry 583535
50	140	14	110	4xM12x55		587336	Enquiry 583536
65	160	14	130	4xM12x55		587337	Enquiry 583537
80	190	16	150	4xM16x65		587338	Enquiry 583538
100	210	16	170	4xM16x65		587339	Enquiry 583539
125	240	18	200	8xM16x65		587341	Enquiry 583541
150	265	18	225	8xM16x65		587342	Enquiry 583542
200	320	20	280	8xM16x75		587344	Enquiry 583544
250	375	22	335	12xM16x75		587346	Enquiry 583546
300	440	22	395	12xM20x80		587348	Enquiry 583548

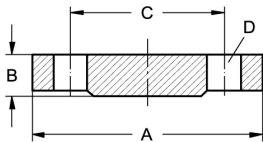
Blind flange EN 1092-1, form A, PN 10



DN	A	B	C	D		AISI316L-1.4404	AISI316Ti-1.4571
200	340	24	295	8xM20x80		587444	Enquiry 583744
250	395	26	350	12xM20x80		587446	Enquiry 583746
300	445	26	400	12xM20x80		587448	Enquiry 583748
350	505	26	460	16xM20x80			583701
400	565	26	515	16xM24x90			583702
450	615	28	565	20xM24x90			583704
500	670	28	620	20xM24x90			583703

10 - 40 Use flanges ND 40. 50 - 150 Use flanges ND 16.

Blind flange EN 1092-1, form B1, PN 10



DN	A	B	C	D		AISI316L-1.4404	AISI316Ti-1.4571
200	340	24	295	8xM20x80		587544	Enquiry 583944
250	395	26	350	12xM20x80		587546	Enquiry 583946
300	445	26	400	12xM20x80		587548	Enquiry 583948
350	505	26	460	16xM20x80			583901
400	565	26	515	16xM24x90			583902
450	615	28	565	20xM24x90			583904
500	670	28	620	20xM24x90			583903

10 - 40 Use flanges ND 40. 50 - 150 Use flanges ND 16.